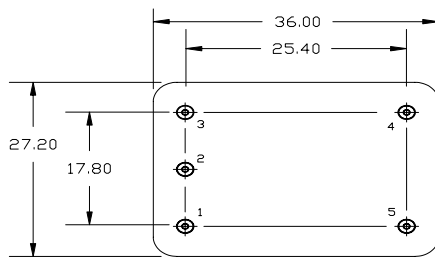
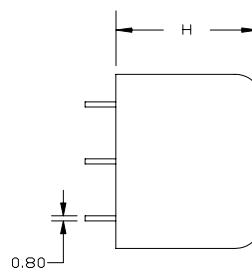


STANDARD SPECIFICATIONS

Frequency	1.000MHz To 150.000 MHz	
Cut	SC	
Output		
Wave form	Sine Wave	HCMOS
Level	7 dBm \pm 3 dBm	'0' <0.4 Vdc, '1' >0.9Vcc
Duty Cycles	NA	50% \pm 10%
Rise/ Fall time	NA	<10 ns
Harmonics/ Spurious	-20 dBc / -60 dBc	NA
Stability		
Temperature	To \pm 0.01 ppm *	
Supply Voltage \pm 5%	To \pm 0.005 ppm	
Load \pm 10%	To \pm 0.005 ppm	
Aging 1 st year	To \pm 0.03 ppm	
Warm up ref. To frequency @ 1 hr	@ 25°C \pm 0.05 ppm in 5 minutes	@ -30°C \pm 0.05 ppm in 10 minutes
Phase Noise Typical	Offset	Phase Noise
	10 Hz	-120dBc
	100 Hz	-140 dBc
	1000 Hz	-145 dBc
	10,000 Hz	-150 dBc
Voltage control	0 Vdc to V Ref.	
Voltage control range	\pm 0.5 ppm min.	
Oven monitor (Optional)	Operating >2.5 Vdc , Fault <0.5 Vdc @ steady state	
Power Supplies		
Supply Voltage	+5 V \pm 5%	+12 V \pm 5%
Supply current max. during warm up	700 mA	400 mA
Supply current typical @ 25°C	400 mA	170 mA
Temperature		
Operating	-30°C to +75°C (standard)	
Storage	-40°C to +125°C	



Dimension Units: mm



H is dependent on frequency and stability, 19.5 mm Max. for any combination.

Pin	Connection
1	Control Voltage
2	N.C.
3	Vcc
4	Output
5	GND / Case

QVS TECH INC

6965 El Camino Real, Ste 105 Carlsbad, CA 92009

Phone: (760) 929-8677 Fax: (760) 929-8077

qvstech.com

Specifications subject to change without notice (Rev C)